

minivation

new innovations for a classic design

Designed and made in the UK

FULLY ARTICULATED HINGES Saloon v3.0 Instructions

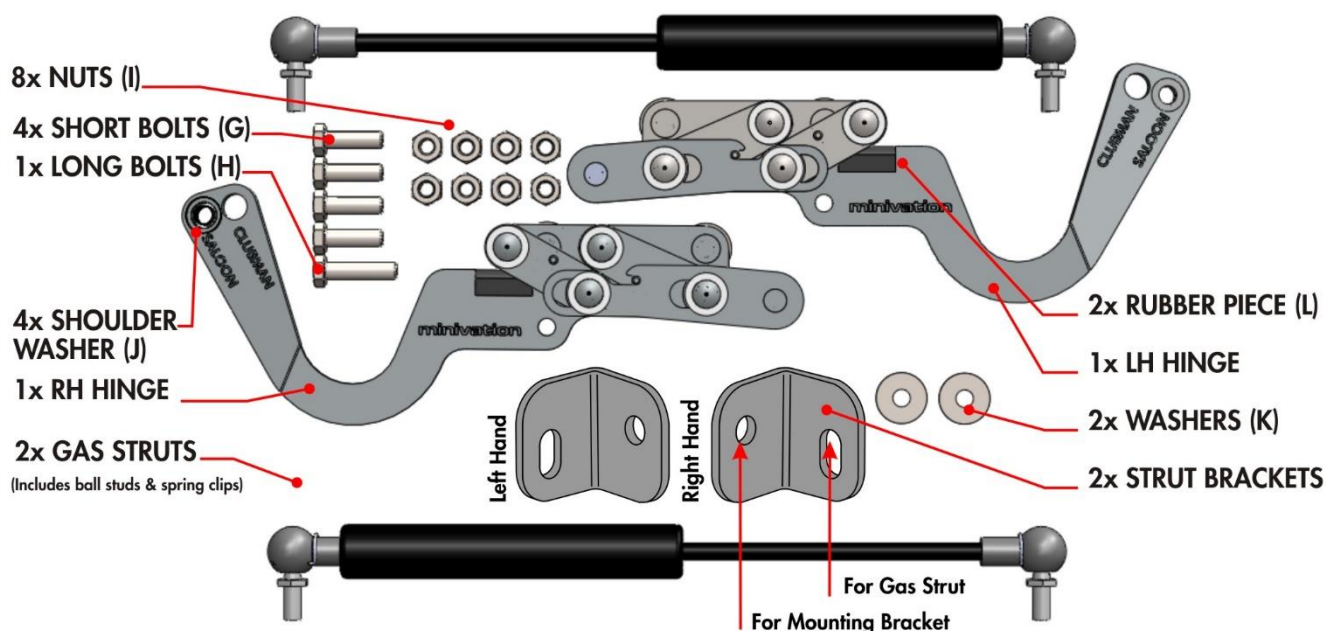


Thank you for purchasing these hinges. We are certain that they will bring you much needed relief from the perils of the classic mini engine bay! If for any reason you get stuck installing them, please don't hesitate to get in touch. >>**NOTE Right and left are considered from the drivers position**<< Please remember to cover your bodywork when fitting the hinges so as not to damage your mini whilst taking the bonnet on/ off.

Please do not force the hinges open or closed and check all gaps, clearances and the state of the slide latches before operating the bonnet.

Do take care not to trap your fingers in the moving parts once installed (warning stickers are included which should be adhered to the bonnet as close to the hinges as possible).

** ENCLOSED YOU WILL FIND **



** YOU WILL NEED **

- | | |
|---|---------------------------------|
| A Suitable material to protect body work | D 2x 10mm socket/spanner |
| B Masking tape | E Lubricant |
| C 7/16 UNF socket/spanner | F Sharp Knife/Scalpel |

⚠ CAUTION



Pinch Point
Keep fingers clear of moving parts



2 Person Job
Installation will be made easier with 2 people

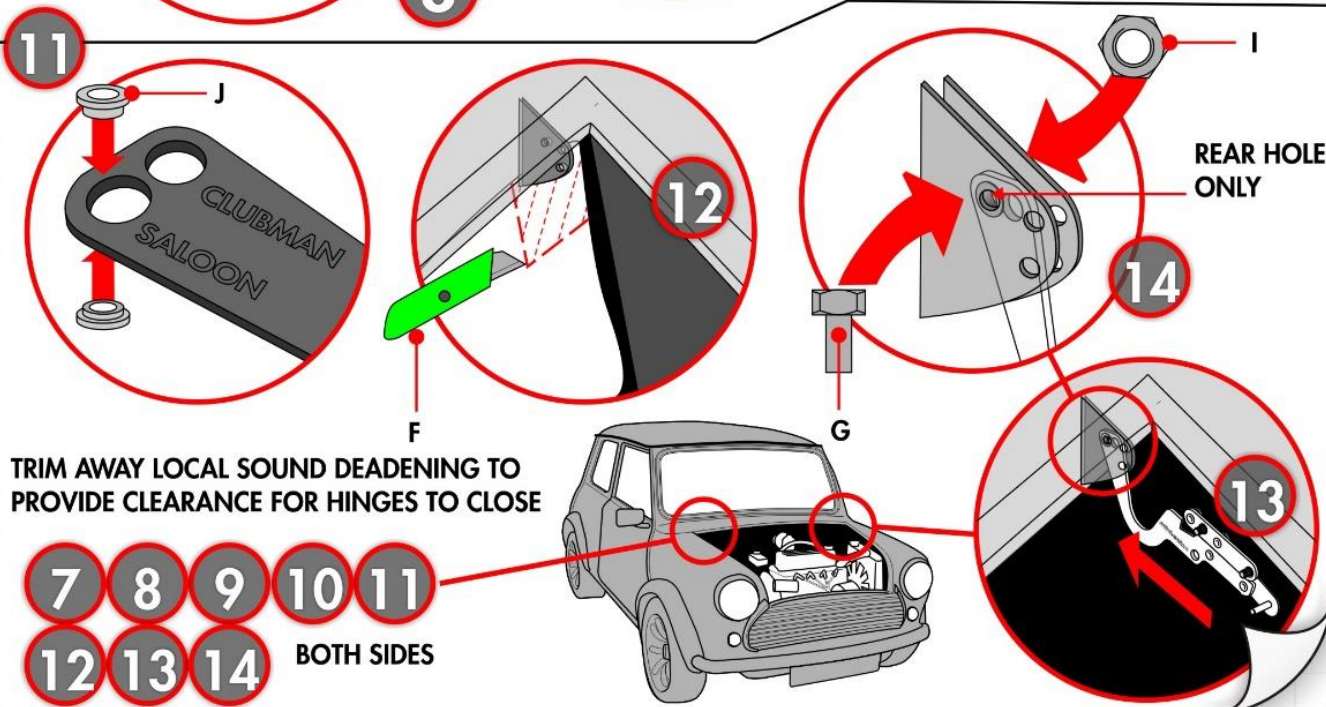
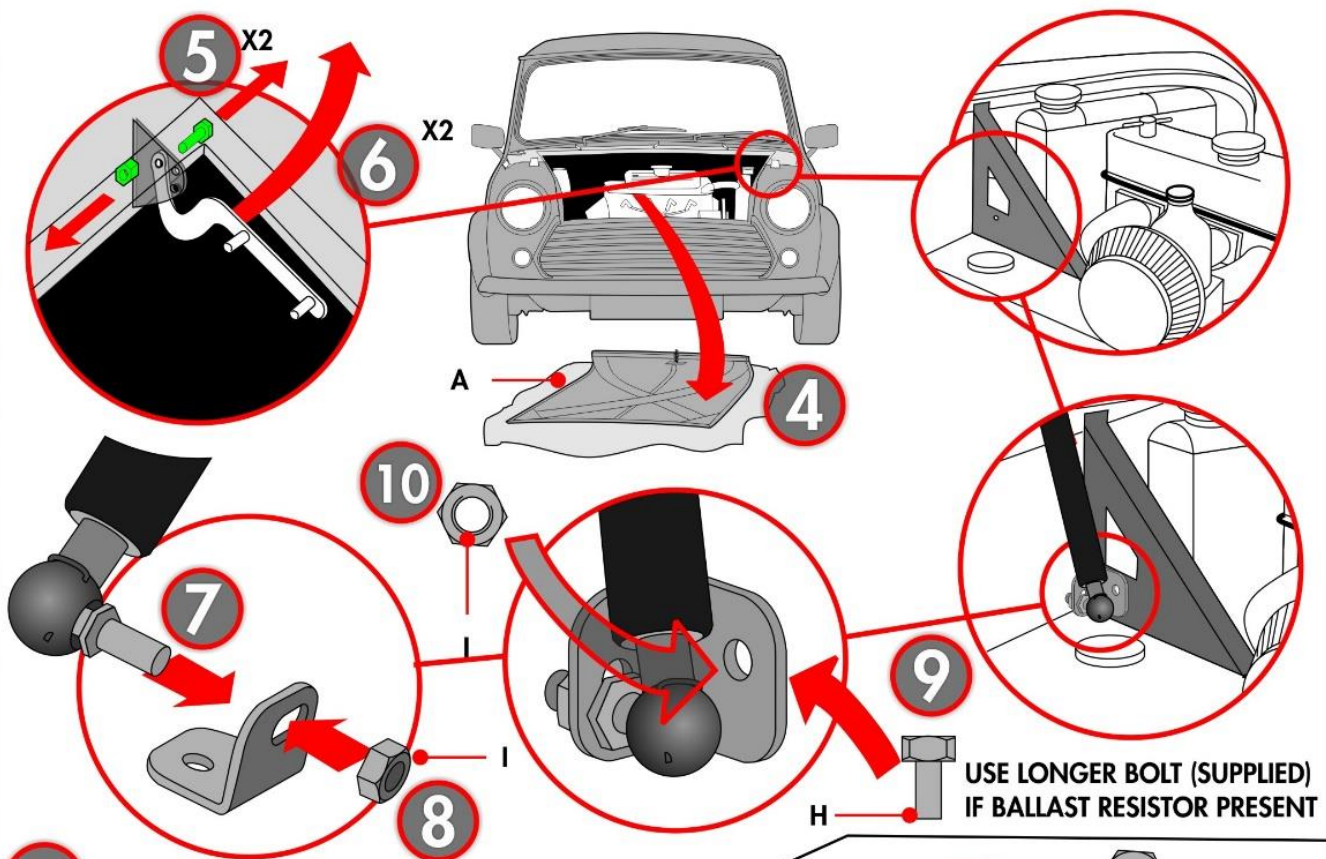
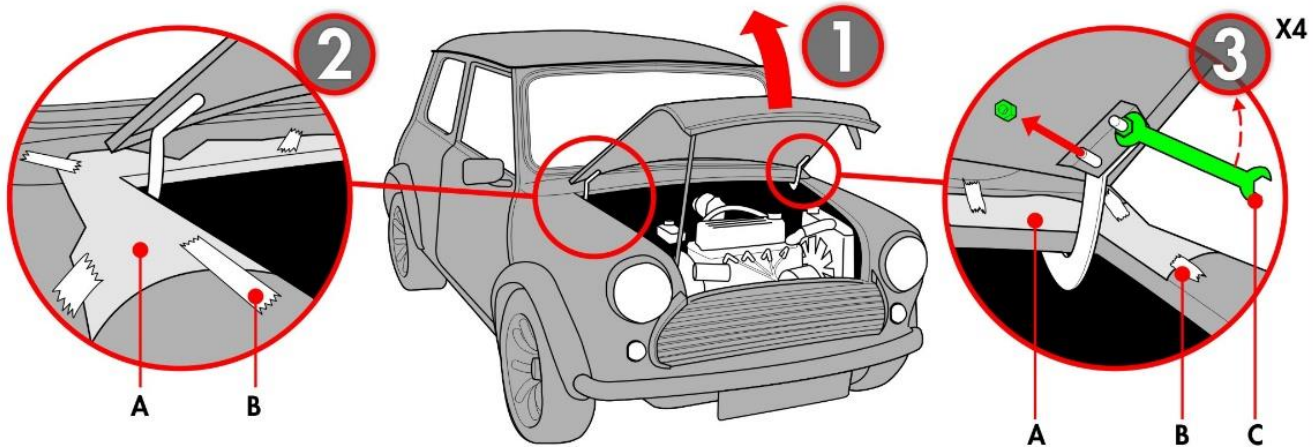


Compressed Gas
Eye protection should be worn at all times

minivation

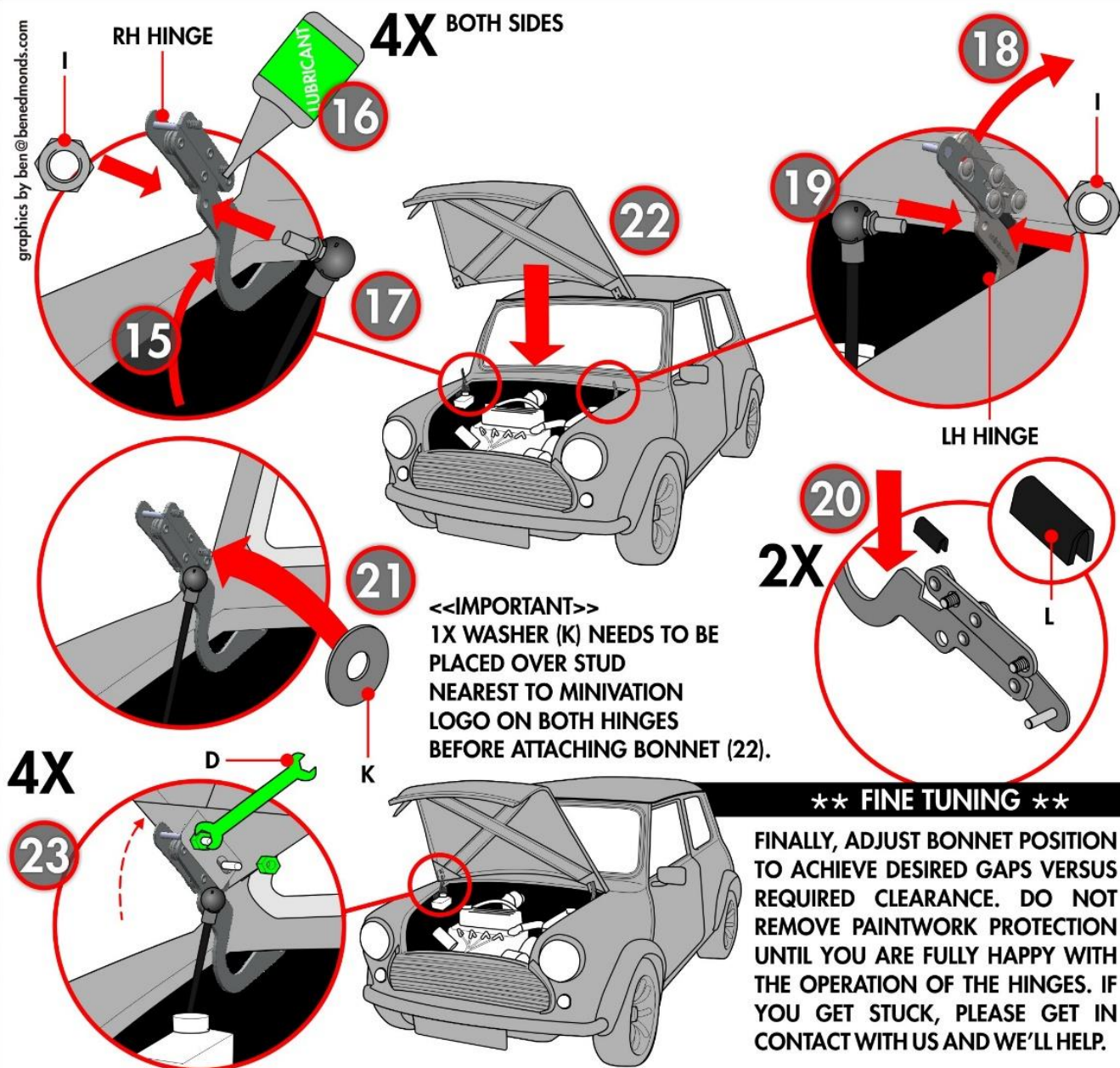
07515945120
www.minivation.net
twitter @ minivation
facebook.com/minivation

P1





graphics by ben@benedmonds.com



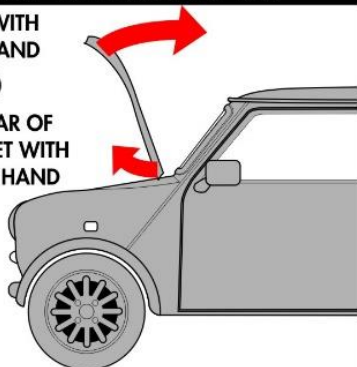
**** OPERATION ****

OPENING

**LIFT BONNET A LITTLE TO TAKE THE WEIGHT
THEN PULL BOTH SLIDE LATCHES TO UNLOCK**



**PUSH WITH
ONE HAND
AND
LIFT REAR OF
BONNET WITH
OTHER HAND**



**LIFT BONNET A LITTLE TO TAKE THE WEIGHT
PUSH BOTH SLIDE LATCHES TO LOCK
ENSURE THE SLIDE LATCH IS FULLY ENGAGED
AND YOU HEAR A CLICK!**



CLOSING

REVERSE PREVIOUS PROCEDURE
REMEMBER TO LIFT THE BONNET A LITTLE

**** OPERATION INSTRUCTIONS & DISCLAIMER ****

- ★ **Minivation accepts no responsibility for damage to owners vehicles from improper installation or operation**
- ★ Ensure hinges are oiled and free moving **before use**
- ★ Lubricate hinges every three months
- ★ You must use BOTH HANDS to open the bonnet due to the action of the hinges
- ★ Ensure slide latch is released before closing bonnet from vertical
- ★ Ensure the slide latches are locked **before** fully closing the bonnet or it will sit up at the back
- ★ Hinges are designed to gain greater access to engine bay whilst car is **fully** stationary
- ★ Hinges are **not** intended for use on bonnets fitted with additional rally lights or other heavy accessories